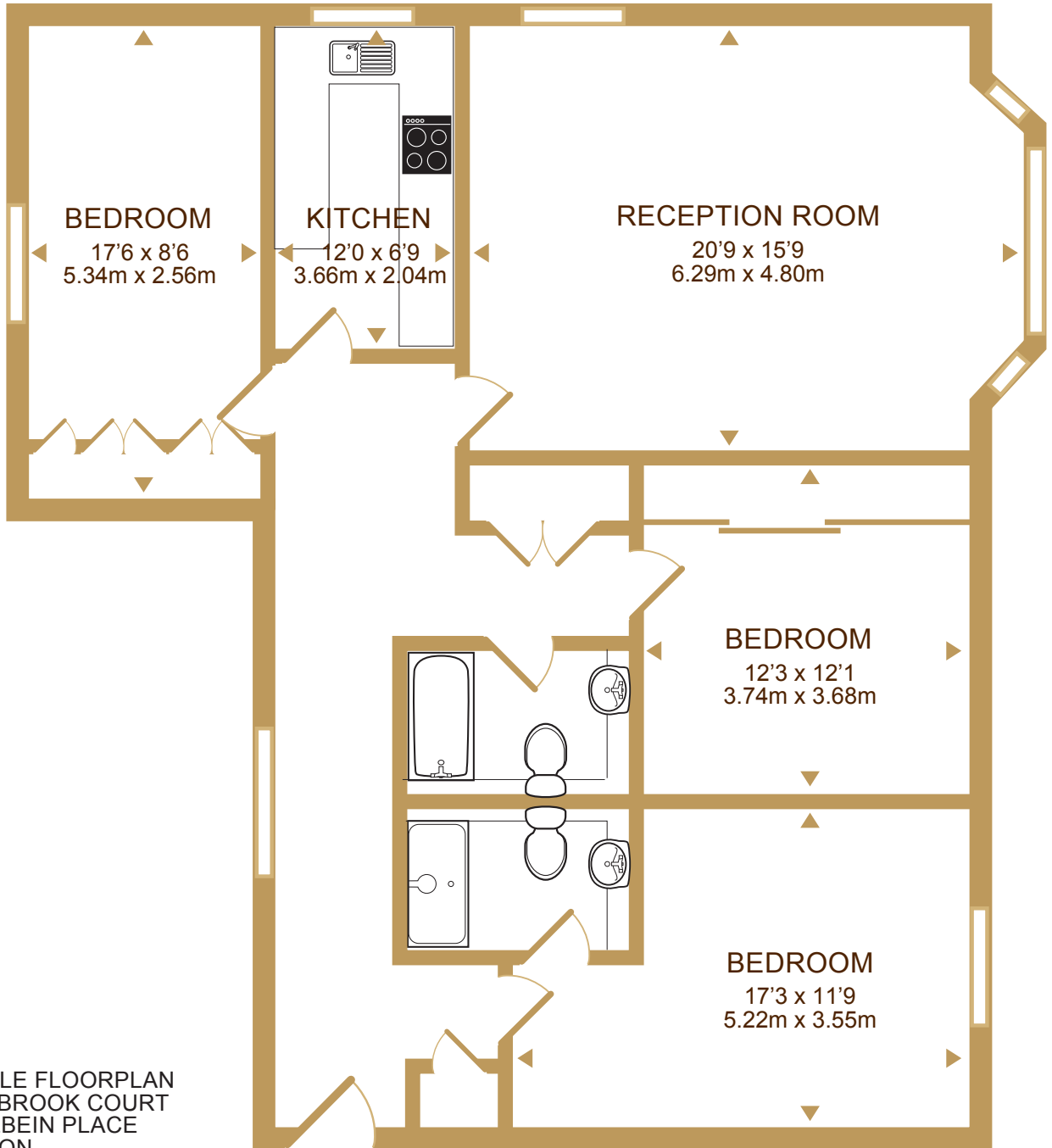




PEERMAN
PREMIER
SLOANE SQUARE,
CHELSEA



SAMPLE FLOORPLAN
TARNBROOK COURT
9 HOLBEIN PLACE
LONDON
SW1

Approximate Gross Internal Area:
1242 sq.ft.
(115.38 Sq.m.)

Whilst every attempt has been made to ensure the accuracy of the floor plan shown here, measurements of doors, windows, rooms and any other items are approximate and no responsibility is taken for any error, omission, or mis-statement. This plan is for illustrative purposes only and should be used as such by any prospective tenant.